

Ponceau Protein Stain

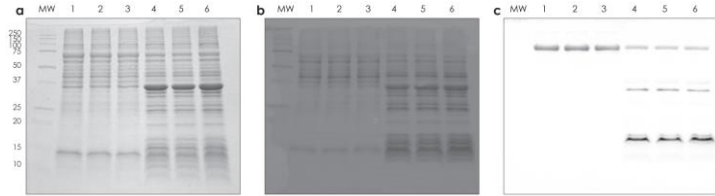
Description:

Ponceau Protein Stain rapidly detects proteins on nitrocellulose and PVDF membranes, allowing you to check the quality of protein transfer before proceeding to Western blotting.

After transferring protein from a gel to a PVDF or nitrocellulose membrane, incubate the membrane in the ready-to-use Ponceau Protein Stain solution for 5 minutes or less to detect protein bands. The staining allows you to quickly check that transfer was even across the gel, and determine whether there are any transfer artifacts such as bubbles, before you move on to incubate the blot with primary antibody. The membrane can be destained in minutes by incubating in water, and is then ready for Western blotting.

- **QUICK** – Detect proteins in 5 minutes or less
- **REVERSIBLE** – Destain in minutes
- **COMPATIBLE** – PVDF and nitrocellulose membranes are ready for Western blotting after destaining

Ponceau Protein Stain quickly checks protein transfer and is compatible with Western blotting:



- a) stained gel with Coomassie blue
- b) stained membrane with Ponceau Protein Stain
- c) destained b and detected using Glossy Plus HRP Substrate

Short Protocol:

1. Following the transfer, wash your blot in copious amount of high purity water for 10 minutes.
2. Immerse the blot in 10-20 ml of Ponceau Protein Stain solution (at least 0.2 ml/cm² membrane) and stain for 5 minutes on orbital shaker.
3. Drain off and decant the staining solution and rinse the membrane with high purity water until the background is reduced. Avoid prolonged rinsing which may destain the bands.
4. Image the blot for permanent record.
5. Destain the blot in water for 10-20 minutes. Complete destaining is achieved during subsequent blocking step during which remaining Ponceau Protein Stain dye will not interfere with blocking or antibody binding.
6. Continue with Western blot procedure.

For Orders:

Catalog Number	Product	Size
NB0503021M1	Ponceau Protein Stain	500 mL